

place to be!

What is a Subscriber?

Subscribers purchase at least one of the six Fountain Inn Civic Center series to guarantee their performance dates, times and seats before single tickets go on sale to members and the public. By subscribing, you enjoy the best shows from the best seats in the house, and the opportunity to renew or improve those seats year after year..

Membership

It is the role of a lifetime! Become a Member today and enjoy the benefits of membership all year! For your \$50 fee as a member you enjoy:

- Early access to ticket-buying opportunities at the Fountain Inn Civic Center.
- Invitations to exclusive members-only events, preview, and receptions
- Complimentary Monthly Access to Members receptions at select events for you and your guest.
- If a season subscriber, a \$3 Discount per ticket on additional ticket purchases for any series.
- E-mail notifications of new shows.
- Recognition in playbill.
- 10% discount on all visual and performing arts classes, workshops, and camps.
- Discounts on purchases at the INN store (coming soon!).
- Complimentary ticket exchange service (\$1.50 per transaction).
- No Box Office Processing Fee (\$3.00 per transaction).
- Free ticket mailing service (\$1.50 per transaction).

www.ficiviccenter.org
(864) 409-1050

315 North Main Street
Fountain Inn, South Carolina
29644
(864) 409 1050



www.ficiviccenter.org

2011-2012 HIGHLIGHTS

OCTOBER
THE ODD COUPLE,
Female Version

NOVEMBER
STEEP CANYON RANGERS

JANUARY
The World Famous
GLENN MILLER ORCHESTRA

MARCH
Andy Cooney's
FOREVER IRISH SHOW



2011-2012



Photo from FIRE's 2011 production of "EVITA"

...the Inn

WELCOME!

The Fountain Inn Civic Center for the Visual and Performing Arts is located in Historic Fountain Inn, South Carolina. Our 485 seat theatre is listed on the National Historic Register and presents the finest in performing arts to the surrounding towns.

Performances include plays, musical productions, professional dance troupes, festivals, recitals, visiting professional artists of various genres including country, bluegrass, gospel, pop, big band, orchestral, and more.

The charm of this historic and state-of-the-art technical facilities provide the highest professional standards for both the audience and the performers. With our main focus on family entertainment, this is a place to come and enjoy a good time with all that Fountain Inn has to offer.

Our center nurtures the development, understanding, and appreciation of the arts throughout the community and the region by offering performances, classes, symposiums, workshops, and more in the visual and performing arts. We hope that you will come enjoy all that we have to offer!

Anita M. Sleeman
Assistant Civic Center Director

TRIBUNE TIMES

FIRE SERIES

Series Subscription \$90/\$75/\$45

Footloose

August 12, 13, 14, 18, 19, & 20

Dear Edwina Jr.

September 22, 23, 24, & 25

The Odd Couple, female version

October 13, 14, 15, 16, 20, 21, 22, & 23

A Wonderful Life

December 1, 2, 3, 4, 8, 9, 10, & 11

The Drowsy Chaperone

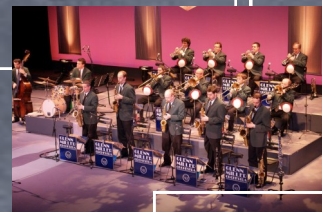
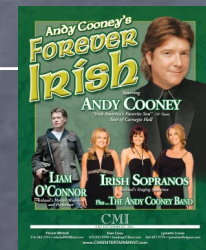
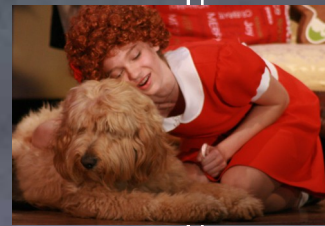
February 16, 17, 18, 19, 23, 24, 25 & 26

Schoolhouse Rock Live, Jr.

March 15, 16, 17, & 18

Bye, Bye Birdie

April 19, 20, 21, 22, 26, 27, 28, & 29



COMMUNITY JOURNALS

CHAMBER SERIES

Series Subscription \$65/\$55/\$25

Greenville Concert Band

September 11, December 16, March 11

Greenville Brass Quintet

October 7 & 8

Charleston Pro Musica

January 21

GSO Spotlight Series

March 30



INN SERIES

Series Subscription \$120/\$120/\$120

Comedian George Casey

September 16

Emile Pandolfi at Christmas

November 25

The World Famous

Glenn Miller Orchestra

February 4

Rick Alivit's

"That's the Way it Was"

A tribute to Elvis

February 11

James Gregory

March 2



FOUNTAIN INN FIVE

Series Subscription \$50/\$50/\$50



Disney's Cinderella Kids!

June 23, July 21, or August 11

O America!

July 3

Arts Academy

Faculty Recital

September 8, November 10, January 12

IGNITE Concerts

October 2, February 2, March 10

Oktoberfest

October 28 & 29

Give My Regards to Broadway!

November 11

Christmas at the Civic Center

December 17

Eastertime Concert

March 31

Spring Choral Concert

May 4

CULTURAL SERIES

Series Subscription \$65/\$60/\$50

French Fest

July 15 & 16

Dancing through Life: Tribute to Peg Leg Bates

September 30



Oktoberfest

October 28 & 29

NRITHYANJALI

School Of Dance

November 19

Andy Cooney's

FOREVER IRISH SHOW

March 3

Cinco de Mayo

Alma de Candela

May 5



BLUEGRASS SERIES

Series Subscription \$70/\$70/\$70

Doyle Lawson & Quicksilver

August 27

Steep Canyon Rangers

November 4

Sierra Hull & Highway 111

March 9

www.ficiviccenter.org

(864)409-1050